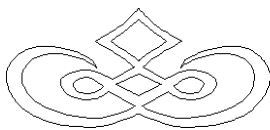


---

---

# MIT S



# BIT S

---

---

Museum Institute for Teaching Science

Vol. 1 • No. 2 • December, 1995

---

## Message from the President

### *Professional Development Seminars*

The Professional Development Seminars are presently being planned according to suggestions made by last year's participants. A series of topics will be presented across the state. Your staff may attend one or all of the seminars with a fee of \$25 per seminar. Registration for all five seminars is only \$100. Topics which we know will be covered are equity, inquiry mode teaching, using the frameworks, and math/science integration. The seminars will be during the winter before your busiest time. New material and presenters will be offered so even if someone attended a past seminar on these topics different aspects of the subject will be explored. I hope you will encourage your staffs to attend and benefit from the interaction with their peers as well as the concepts presented.

Please contact the MITS office for seminar dates and times, or to be put on the PDS mailing list.

*Paddy Wade*

---

## MIT S 1996 Summer Workshops are Coming!

MIT S will present two-week workshops for elementary and middle school teachers throughout Massachusetts once again this summer. The theme for 1996 is The Forces of Nature: The Physics of the Natural World. The summer workshop will be held July 8-19 at museums and cultural sites around the state.

Teachers completing the workshop and required work will receive 60 Professional Development Points toward recertification. Participants may also apply for graduate credit at a discounted rate at a Massachusetts state college.

For more information, please call the MITS office at 617-695-9771.

---

## Acton Discovery Museums Welcome Back Lechner

Stephen Lechner has joined the staff at the Science Discovery Museum in Acton as Education Director. Lechner replaces Fred Stein who has taken a position at the Exploratorium in San Francisco. Lechner served as Education Director for the Children's Discovery Museum five years ago. Since then he worked for Wheelock College as a science and math specialist assisting in Boston public schools as part of their support for PALMS. Lechner also presented science workshops for teachers at in-services and conferences, and performed science magic shows for children in Massachusetts schools. He is currently working on his Master's degree in education at Lesley College.

In his position as Education Director, Lechner hopes to make the Science Discovery Museum the place where people in the Acton area will turn for science education resources.

---

---

---

MIT S BITS is published quarterly by the Museum Institute for Teaching Science.  
Please direct any comments or submissions to MITS, Inc. by U.S. mail or email.

MIT S, Inc. • 79 Milk Street, Suite 210 • Boston, MA 02109-3903 • 617-695-9771 • mits@usa1.com

---

## New Exhibit at Green Briar Nature Center

### *The Work of a Naturalist*

The Thornton Burgess Society's Green Briar Nature Center in East Sandwich has a new exhibit exploring the work of Dorothy Nye Holway, a local naturalist. Holway kept detailed nature journals from 1938 to 1953 which recorded the natural events, especially bird life, in her yard close by Green Briar. She observed and identified the resident and visiting wildlife, and noted changes in the same environment over many days and years. Using all the data she had gathered, she wrote intelligent conclusions.

For more information about this exhibit, call Green Briar at 508-888-6870.

---

## New Archaeology Program at Cape Cod Museum

The staff at the Cape Cod Museum of Natural History has created an exciting new program to introduce students to the science of Archaeology. Participating in a life sized simulated archaeological dig, students must draw upon the disciplines of math, science, social studies and the arts. After carefully mapping, drawing and researching the artifacts and features which they uncover, teams report their findings and interpretations to the group.

Outdoors, through the eyes of the archaeologist, the focus is on the local environment. Learning about landforms, settlement patterns, and useful and edible plants, students are asked to consider human survival and its relationship to natural resources.

This multi-faceted program is suitable for students in grades five through twelve. For a copy of the brochure contact the registrar Joanne Corsano at 800-479-3867, ext. 21.

---

## New Exhibits at Springfield Science Museum

### *What About AIDS?*

What About AIDS?, the first national traveling exhibit on the science of HIV/AIDS, is now on display

at the Springfield Science Museum through January 28.

What About AIDS? uses a combination of clear, concise text, personal stories, photo essays, interactive computer programs, video and hands-on components to educate people of all ages.

The exhibit is divided into three major sections: "What is HIV/AIDS?", "Protect Yourself", and "What Can We Do About It?".

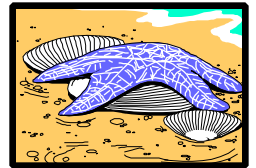
What About AIDS? was produced and developed by the National AIDS Exhibit Consortium and funded by a Centers for Disease Control Grant. Circulation of the exhibit is managed by the Association of Science-Technology Centers.

Volunteers may still be needed for interacting with the public at this exhibit. For more information, please call the museum at 413-733-1194.

### *Monsanto Eco-Center*

The new Monsanto Eco-Center at the Springfield Science Museum is now complete. There are six "living" habitats to view:

- North American Sea Coast
- North Eastern River & Stream
- Fresh Water Lake
- Coral Reef
- Coastal Estuary
- Flooded Amazonian Rain Forest

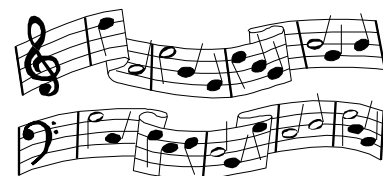


All new exhibits are free with regular paid museum admission.

---

## Acton Develops New Science Exhibits

Three new exhibits at the Science Discovery Museum in Acton allow for hands-on learning. Children can draw harmonograph pictures on a computer screen at the Harmonograph Computer Simulation Table, compose and play music at the Rubber Ball Music Wall, and experiment with magnetic fields at the Magnet Table.



---

---

## Interesting Internet Sites

Visit the National Science Teachers Association world wide web site at <http://www.nsta.org/>. You'll find out about this year's area conventions as well as the National Convention in St. Louis. Also posted is information on NSTA journals, reports, projects, contests and awards. You can also follow links to other science and math education resources.

Check out the ever-expanding site at <http://www.boston.com/>. Follow links to get information on a variety of Massachusetts museums and other cultural centers, as well as movie times, real estate, sports events, and help wanted. Lots of hidden buttons on the home page make for fun web surfing.

You can participate in the JASON VII Project through the Internet by joining discussion groups and news groups by logging on to the JASON web site at <http://seawifs.gsfc.nasa.gov/JASON.html>. The major themes of JASON VII are natural cycles in coastal communities and how they can be used as indicators of environmental health and as models of natural adaptation to changing environments.

### *Some Museum Home Pages*

#### **Bishop Museum**

Honolulu, HI

<http://www.bishop.hawaii.org/>

#### **California Academy of Sciences**

San Francisco, CA

<http://www.calacademy.org/>

#### **Chicago Academy of Sciences**

Chicago, IL

<http://www.mcs.com:80/~cas/home.html>

#### **Discovery Centre**

Halifax, Canada

[http://www.cfn.cs.dal.ca/Science/DiscCentre/DC\\_Home.html](http://www.cfn.cs.dal.ca/Science/DiscCentre/DC_Home.html)

#### **Exploratorium**

San Francisco, CA

<http://www.exploratorium.edu/>

#### **Franklin Institute Science Museum**

Philadelphia, PA

<http://sln.fi.edu/>

#### **Houston Museum of Natural Sciences**

Houston, TX

[http://chico.rice.edu/armadillo/hmns/museum\\_home.html](http://chico.rice.edu/armadillo/hmns/museum_home.html)

#### **National Air and Space Museum**

Washington, D.C.

<http://ceps.nasm.edu/>

#### **National Museum of Science, Planning, and Technology**

Haifa, Israel

[http://www.elron.net/n\\_sci\\_museum/](http://www.elron.net/n_sci_museum/)

#### **Ontario Science Centre**

Don Mills, Canada

<http://www.osc.on.ca/>

#### **Oregon Museum of Science and Industry**

Portland, OR

<http://www.oms.edu/>

#### **St. Louis Science Center**

St. Louis, MO

<http://atgl.wustl.edu:80/slsc/>

#### **Science Museum of Minnesota**

St. Paul, MN

<http://www.ties.k12.mn.us:80/slsc/>

#### **Science World British Columbia**

Vancouver, Canada

<http://www.ScienceWorld.bc.ca/>

#### **Sciencenter**

Ithaca, NY

<http://edison.scictr.cornell.edu/>

#### **Stephen Birch Aquarium-Museum**

San Diego, CA

<http://aqua.ucsd.edu/>

#### **The Tech Museum of Innovation**

San Jose, CA

<http://www.thetech.org/>

---

---

## MCC Public Forums

The Massachusetts Cultural Council will convene a series of public forums in December. These forums will offer an occasion to discuss the MCC's new three-year plan, and learn about several new MCC funding opportunities. Time will also be set aside for updates and discussion on the National Endowment for the Arts and National Endowment for the Humanities.

The forums will be held at four locations around the state from December 5 through 13.

Copies of the MCC three-year plan are available in advance. For more information, please call 800-232-0960.

---

---

## New Course on Biodiversity

The Cape Cod Museum of Natural History will offer a graduate level course entitled "Cape Cod Biodiversity: Past, Present and Future" in March. The course will provide an overview of the diversity of flora, fauna, and habitats on Cape Cod from both an historical and a present-day perspective. The course will also examine population trends among threatened and endangered species and will address cur-

rent and proposed efforts to protect critical habitats and species diversity. A key element in this course will be presentations of on-going research in this field by both scientists and amateur naturalists.

The course will be non-technical and is designed to attract K-12 teachers, fellow naturalists, and the general public. Three graduate level credits will be available from Framingham State College. The course will meet on Thursday evenings and will have some Saturday field trips.

If you would like to be a presenter or a participant in this course, contact Allan Morich at 508-896-3867.

---

---

## Conference Calendar

Mar. 13, 1996

**Massachusetts Environmental Educators Society (MEES)** Conference at College of the Holy Cross, Worcester. For more information contact Patti Steinman at 617-333-0690 or Will Snyder at 413-545-8600.

May 8-10, 1996

**Massachusetts Association of Science Supervisors (MASS)** at the Marlboro Royal Plaza Hotel. For more information call Mary Corcoran at 617-846-6581.

---

**Museum Institute for Teaching Science**  
79 Milk Street, Suite 210  
Boston, MA 02109-3903

Non-Profit Org. U.S.Postage PAID Boston, MA Permit No.50233
---