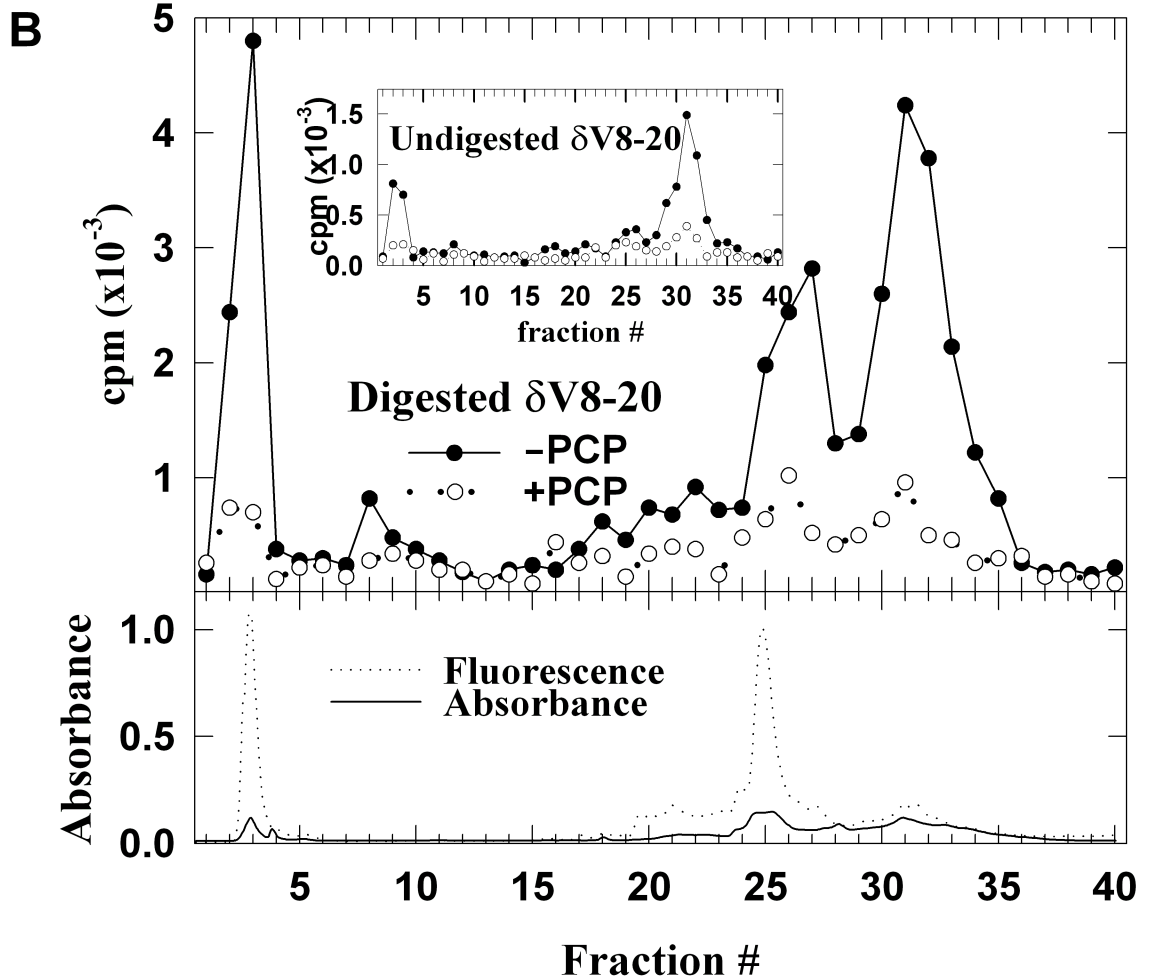
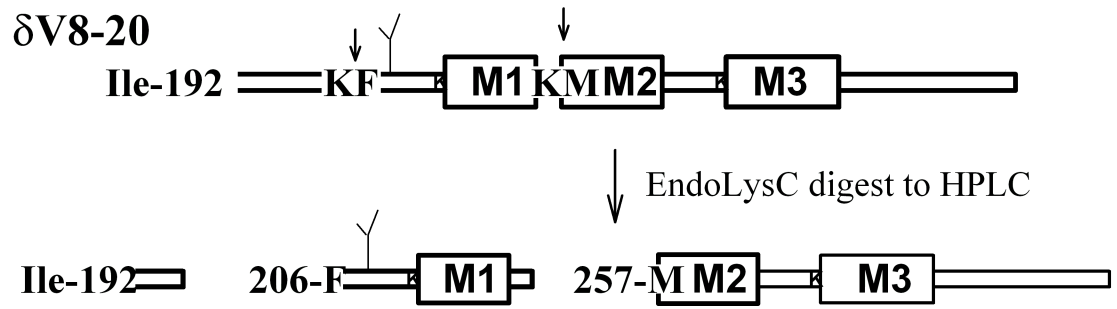


**A**

**Figure 2-10. Reverse-phase HPLC purification of [<sup>3</sup>H]ethidium diazide labeled fragments from EndoLysC digest of  $\delta$ V8-20.**

A. Sequence map of  $\delta$ V8-20. Rectangles,  $\delta$ M1,  $\delta$ M2 and  $\delta$ M3 segments. Arrows, location of two potential sites of EndoLysC cleavage. The resulting cleavage products are indicated.

B. The EndoLysC digests of  $\delta$ V8-20 labeled with [<sup>3</sup>H]ethidium diazide in the presence of carbamylcholine and the absence (●) and presence (○) of PCP were fractionated by reverse-phase HPLC. Upper panel, <sup>3</sup>H elution profiles calculated from 10% aliquot of fractions (Inset, <sup>3</sup>H elution profile of undigested  $\delta$ V8-20 labeled in the absence (●) and presence (○) of PCP). Lower panel, fluorescence (·····) and absorbance profiles (—).